

TEST REPORT

Address : WEST No.1 Building, ZhaoFuDa Industry Park, SongGang BaoAn District, Shenzhen 518105

REPORT ON THE SUBMITTED SAMPLE SAID TO BE:

Sample name : Esd cleanroom smock & coverall
Address : EAST No.1 Building, ZhaoFuDa Industry Park, SongGang BaoAn District, Shenzhen 518105
Materials : Polyester with conductive yarn
Sample received date : Aug. 27, 2018
Testing period : Aug. 27, 2018- Aug. 30, 2018

Test Requested:	Conclusion:
Selected test(s) as requested by client. To determine the Lead, Cadmium, Mercury, Hexavalent Chromium, PBB&PBDE content in the submitted sample in accordance with RoHS Directive PASS 2011/65/EU Annex II	

*****FOR FURTHER DETAILS, PLEASE REFER TO THE FOLLOWING PAGE(S)*****

Signed for and on behalf of YIDE

Tested By: Walter

Examine By: Eric

Approved By: Jimmy
Lab Manager : Jimmy

Date: Aug. 30, 2018



TEST PART DESCRIPTION:

Specimen No.	Description.
01	Polyester fabric

TEST METHOD:

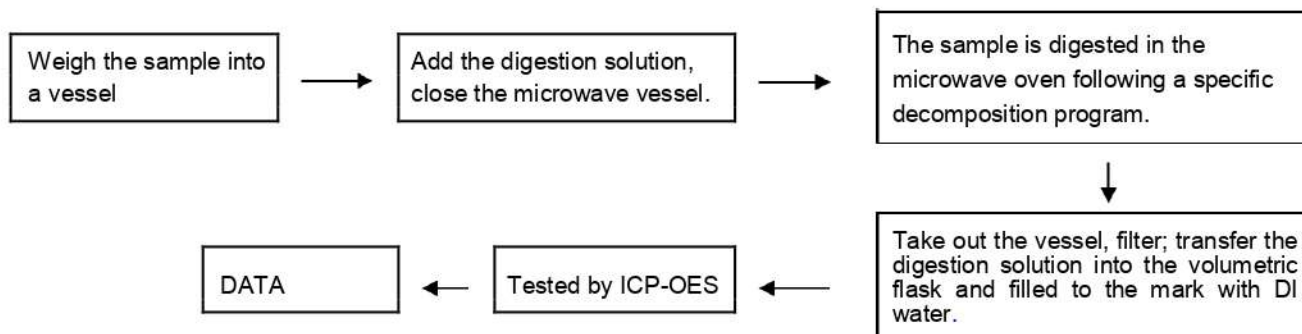
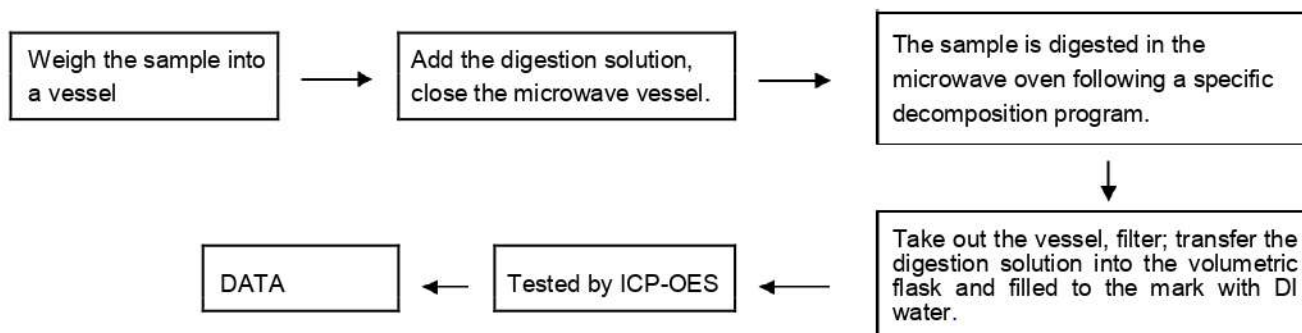
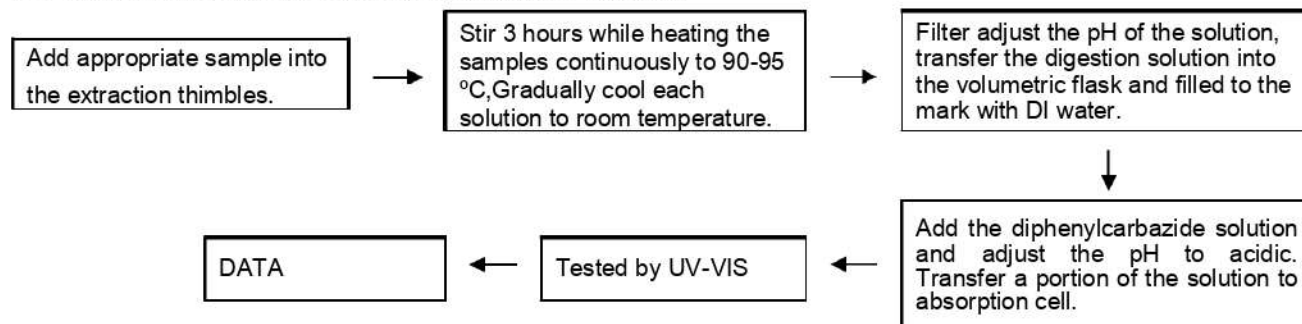
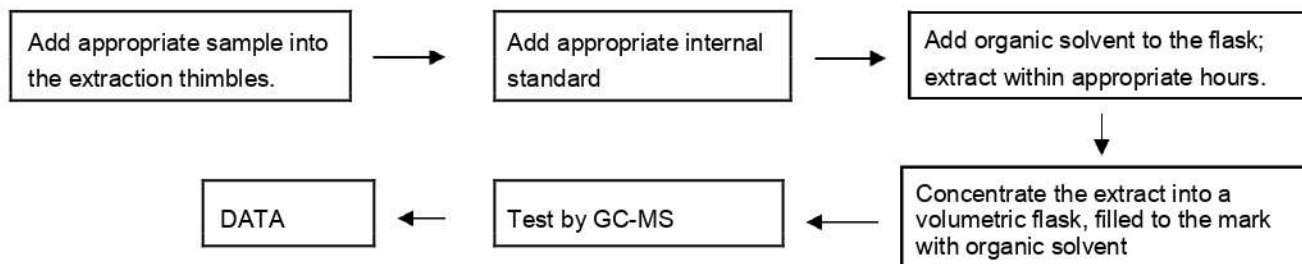
Test Item	Pretreatment Method		MDL
Lead (Pb)	IEC 62321-5:2013	ICP-OES	2 mg/kg
Cadmium (Cd)	IEC 62321-5:2013	ICP-OES	2 mg/kg
Mercury (Hg)	IEC 62321-4:2013	ICP-OES	2 mg/kg
Hexavalent Chromium Cr()	IEC 62321-7:2015	UV-VIS	2 mg/kg
Polybrominated Biphenyls PBBs / Polybrominated Diphenyl Ethers PBDEs	IEC 62321-6:2015	GC-MS	5 mg/kg

TEST RESULT:

Test Item(s)	Limit.	Unit	Test result
			01
Cadmium (Cd).	100	mg/kg	ND
Lead (Pb).	1000	mg/kg	ND
Mercury (Hg).	1000	mg/kg	ND
Hexavalent Chromium (CrVI).	1000	mg/kg	ND
Sum of PBBs.	1000	mg/kg	ND
Monobromobiphenyl.	-	mg/kg	ND
Dibromobiphenyl.	-	mg/kg	ND
Tribromobiphenyl.	-	mg/kg	ND
Tetrabromobiphenyl.	-	mg/kg	ND
Pentabromobiphenyl.	-	mg/kg	ND
Hexabromobiphenyl.	-	mg/kg	ND
Heptabromobiphenyl.	-	mg/kg	ND
Octabromobiphenyl.	-	mg/kg	ND
Nonabromobiphenyl.	-	mg/kg	ND
Decabromobiphenyl.	-	mg/kg	ND
Sum of PBDEs.	1000	mg/kg	ND
Monobromodiphenyl ether.	-	mg/kg	ND
Dibromodiphenyl ether.	-	mg/kg	ND
Tribromodiphenyl ether.	-	mg/kg	ND
Tetrabromodiphenyl ether.	-	mg/kg	ND
Pentabromodiphenyl ether.	-	mg/kg	ND
Hexabromodiphenyl ether.	-	mg/kg	ND
Heptabromodiphenyl ether.	-	mg/kg	ND
Octabromodiphenyl ether.	-	mg/kg	ND
Nonabromodiphenyl ether.	-	mg/kg	ND
Decabromodiphenyl ether.	-	mg/kg	ND

Remarks .:

- (1) 1 mg/kg = 1 ppm = 0.0001%.
- (2) MDL = Method Detection Limit.
- (3) ND = Not Detected (< MDL).
- (4) "-" = Not Regulated.

TEST FLOW:**(1) To Determine Lead and Cadmium Content****(2) To Determine Mercury Content:****(3) To Determine Hexavalent Chromium Content (for Electronics):****(4) To Determine Polybrominated Biphenyls/Polybrominated Diphenyl Ethers Content:**

PHOTOGRAPH OF SAMPLE

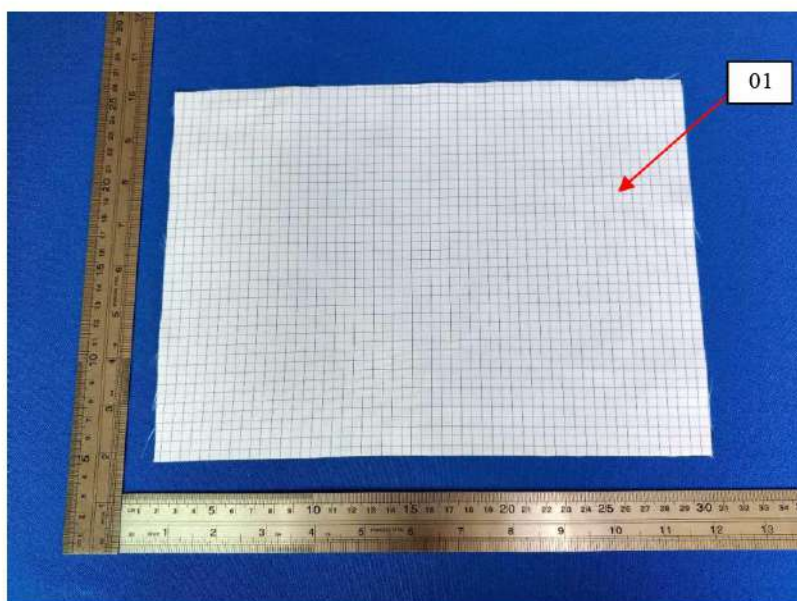


Photo 1



Photo 2 (C0110)



Photo 3 (C0101)

END OF REPORT